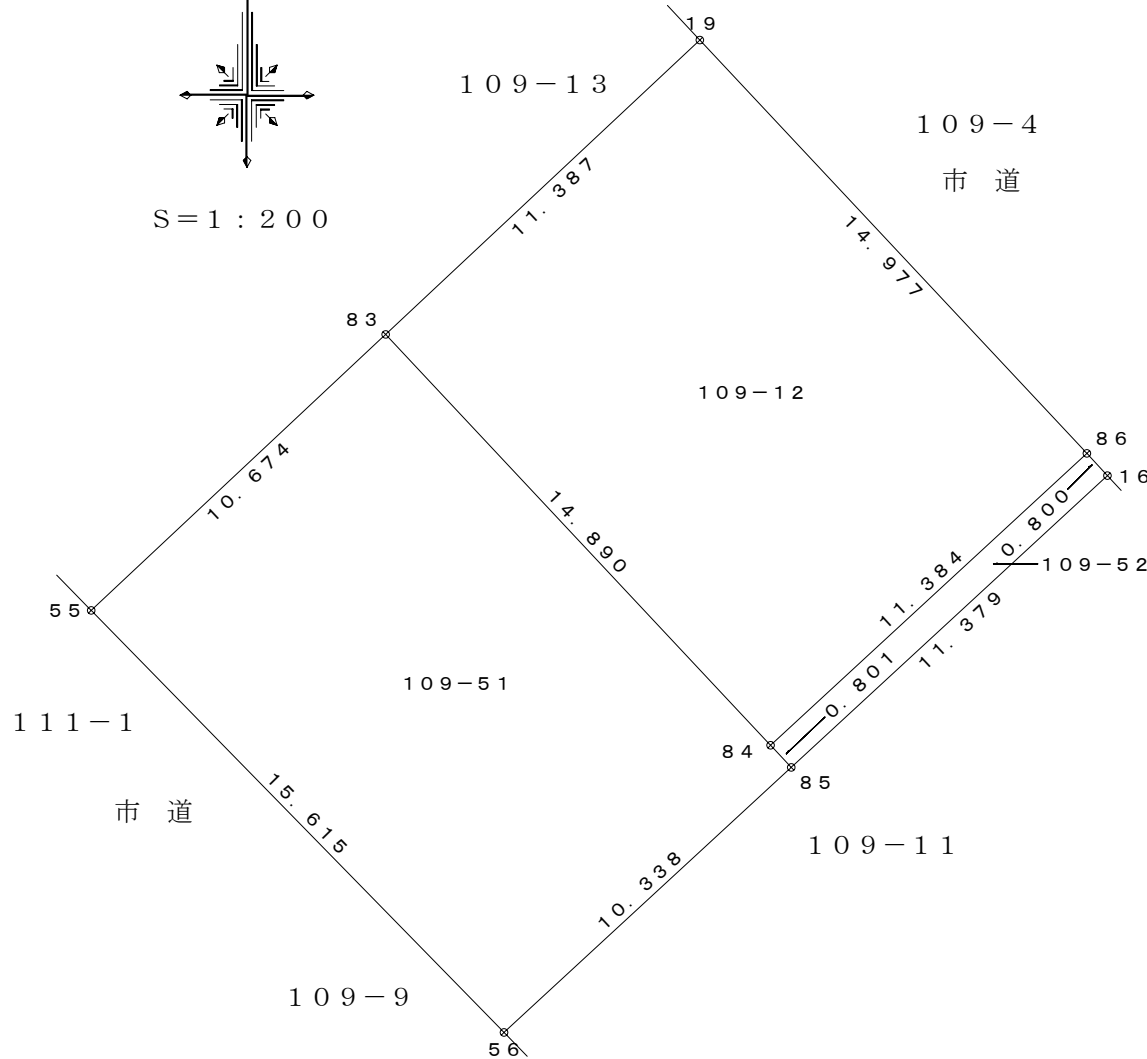


S = 1 : 200



求積表

地番	1 109-12			
NO	Xn	Yn	Yn+1-Yn-1	Xn · (Yn+1-Yn-1)
19	-16279.002	-24802.353	18.548	-301942.929096
86	-16289.933	-24792.115	1.871	-30478.464643
84	-16297.653	-24800.482	-18.548	302288.867844
83	-16286.787	-24810.663	-1.871	30472.578477
合計				340.052582
合計面積				170.0262910
地積				170.02 m <sup>2</sup>

地番	2 109-51			
NO	Xn	Yn	Yn+1-Yn-1	Xn · (Yn+1-Yn-1)
83	-16286.787	-24810.663	17.970	-292673.562390
84	-16297.653	-24800.482	10.728	-174841.221384
85	-16298.238	-24799.935	-7.051	114918.876138
56	-16305.248	-24807.533	-18.517	301924.277216
55	-16294.086	-24818.452	-3.130	51000.489180
合計				328.858760
合計面積				164.4293800
地積				164.42 m <sup>2</sup>

地番	3 109-52			
NO	Xn	Yn	Yn+1-Yn-1	Xn · (Yn+1-Yn-1)
86	-16289.933	-24792.115	8.910	-145143.303030
16	-16290.521	-24791.572	-7.820	127391.874220
85	-16298.238	-24799.935	-8.910	145217.300580
84	-16297.653	-24800.482	7.820	-127447.646460
合計				18.225310
合計面積				9.1126550
地積				9.11 m <sup>2</sup>

総合計面積	343.5683260 m <sup>2</sup>
-------	----------------------------

地番	地積
1 109-12	170.02 m <sup>2</sup>
2 109-51	164.42 m <sup>2</sup>
3 109-52	9.11 m <sup>2</sup>